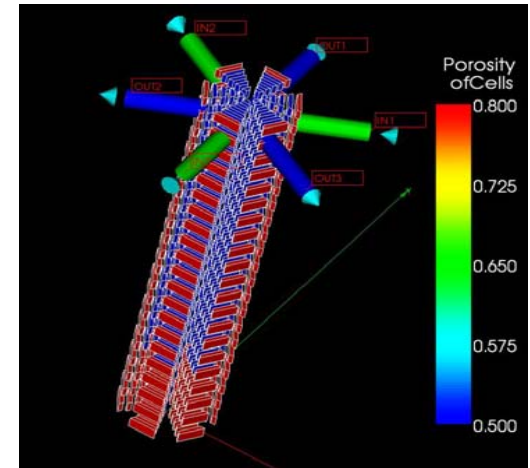
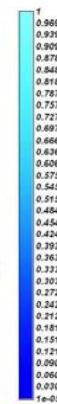
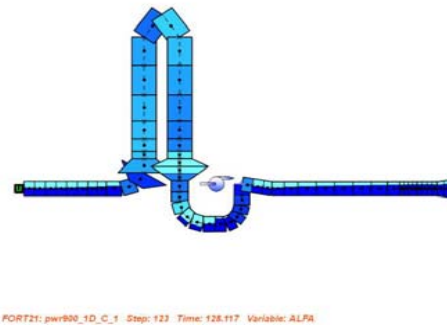
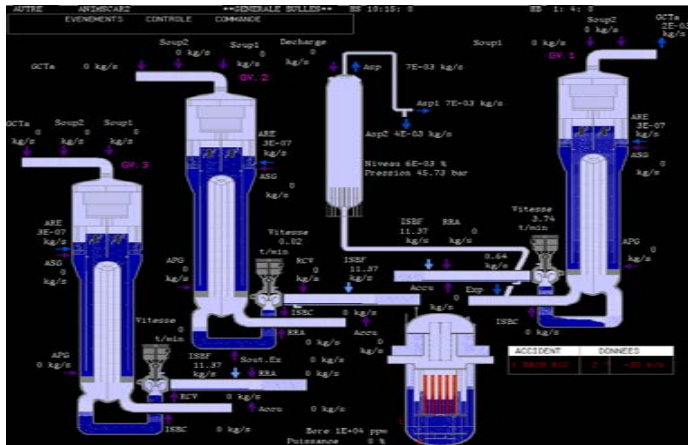


# CATHARE Users' CLUB

**GRENOBLE - France, June 3, 4 and 5 2009**

The CUC is the opportunity :

- For all the users : to show their works on various applications and to share experience on the CATHARE nuclear reactor safety code
- For the CATHARE team : to present features and functionalities of the new version of the CATHARE code



Informations: CEA/DEN/DER/SSTH, [gilles.lavialle@cea.fr](mailto:gilles.lavialle@cea.fr)



## Wednesday June 3rd

# Overview of the CATHARE V2.5 new features CATHARE use by foreign organisations

9:00	<i>Registration</i>		
9:30	<i>Welcome</i>		
9:45	<u>Introduction of the club</u>	15'	CEA
10:00	<u>CATHARE team activities on CATHARE V2.5 code</u>	30'	CEA
10:30	<i>Break</i>		
11:00	Use of CATHARE at ENEA		
	o <u>Validation of CATHARE V2.5 against the PERSEO tests</u>	30'	ENEA-Italia
11:30	Use of CATHARE at University of PISA	30'	PISA-Italia
	o <u>Simulations of the OECD/NEA PSB-VVER Project Tests</u>		
	o <u>Uncertainty Method and Applications with CATHARE2 (BEMUSE Project)</u>		
12.00	<i>Lunch</i>		



## Wednesday June 3rd

# CATHARE use by foreign organisations

14:00	Use of CATHARE at VUJE o <u>Validation of CATHARE V2.5 on Oberhausen helium (EVO) loop</u>	30'	VUJE-Slovakia
14:30	Use of CATHARE at INR o <u>Calculation of B9401 Test in the RD-14M Facility with CATHARE 2</u> o <u>Air Ingress Applications with ICARE/CATHARE</u>	30'	INR-Romania
15:00	<u>Use of CATHARE at BEL-V</u>	30'	BEL-V-Belgium
<b>15:30</b>	<b><i>Break</i></b>		
16:00	Use of CATHARE at NPIC o <u>Validation of CATHARE code against Bethsy test 3.4B".</u>	30'	NPIC-China
16:30	<u>Use of CATHARE at KFKI-AEKI</u>	30'	KFKI-Hungary
17:00	Use of CATHARE at INRNE o <u>CATHARE multi-1D modeling of single-phase vessel mixing in VVER-1000 for RIA analysis</u>	30'	INRNE-Bulgaria
<b>17:30</b>	<b><i>Adjourn</i></b>		



## Thursday June 4th

# CATHARE use by foreign organisations and partners

9:00	Use of CATHARE at KURCHATOV institute o <u>ICARE/CATHARE V2 simulation of a VVER-1000 large break LOCA scenario</u>	30'	KI-Russia
9:30	Use of CATHARE at BARC o <u>Simulation of Accident Scenarios for Indian Reactors using CATHARE/SUNSET</u>	30'	BARC-India
10:00	<i>Break</i>		
10:30	<u>Use of CATHARE at AREVA-NP</u>	45'	AREVA-NP
11:15	<u>Use of CATHARE at IRSN</u>	45'	IRSN
12.00	<i>Lunch</i>		



## Thursday June 4th

# CATHARE use by partners

## GUTHARE

14:00	<u>Use of CATHARE at AREVA-TA</u>	45'	AREVA-TA
14:45	Use of CATHARE at EDF o <u>Use of Cathare in safety studies</u> o <u>Use of Cathare within simulation tools</u>	45'	EDF
<i>15.30</i>	<i>Break</i>		
16:00	Use of CATHARE at CEA o <u>Uncertainty analysis with CATHARE</u> o <u>Coupling with CATHARE</u> <ul style="list-style-type: none"> <li>✓ <u>Existing and under development coupling strategies with CATHARE</u></li> <li>✓ <u>HEMERA : A Highly Evolutionary Method for Effective Reactor Analysis</u></li> </ul>	30'	CEA/SSTH
		15'	CEA/SSTH
		15'	CEA/SERMA
<i>17:00</i>	<i>Adjourn</i>		
<i>19h30</i>	<i>dinner at the restaurant 55 (<a href="http://www.restaurantle55.com">http://www.restaurantle55.com</a>)</i>		



Friday June 5th

## CATHARE 2 V2.5\_2 : A single version for various applications

9:00	Demonstration of the GUIHARE graphic user interface	30'	CEA
9:30	<u>CATHARE 2 V2.5_2 : a single version and various concepts</u>	20'	CEA/SSTH
o 9:50	CATHARE application for Gas Cooled reactor		
	✓ <u>CATHARE2 use as a support to the GFR design</u>	15'	CEA/SESI
	✓ <u>Incidental and accidental transients of the coupling of a VHTR with a hydrogen plant</u>	15'	CEA/SESI
o 10:20	<u>CATHARE application for Supercritical light water reactor</u>	15'	CEA/SESI
<b>10.35</b>	<b>Break</b>		
o 10:50	<u>CATHARE application for Sodium Fast-Breeder Reactor</u>	20'	CEA/SESI



# Friday June 5th

## CATHARE 3

### Conclusions of the CUC

11:10	<u>CATHARE-3: A new system code for thermal-hydraulics in the context of the NEPTUNE project</u>	30'	CEA
11:40	<u>Conclusions of the club</u>	20'	CEA
	<ul style="list-style-type: none"> <li>o Use of the code, requests of users, etc.</li> <li>o Futures versions of CATHARE 2, GUITHARE, CATHARE3</li> <li>o Discussion, remarks</li> </ul>		
12.00	Lunch		
14.00	Adjourn		