

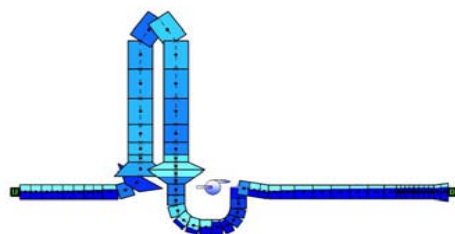
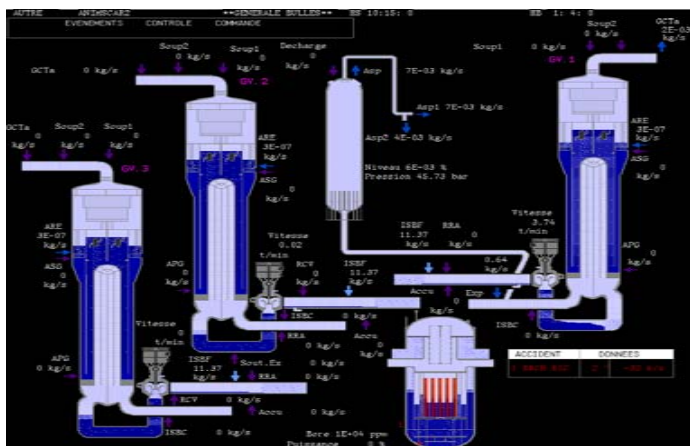


CATHARE Users' CLUB

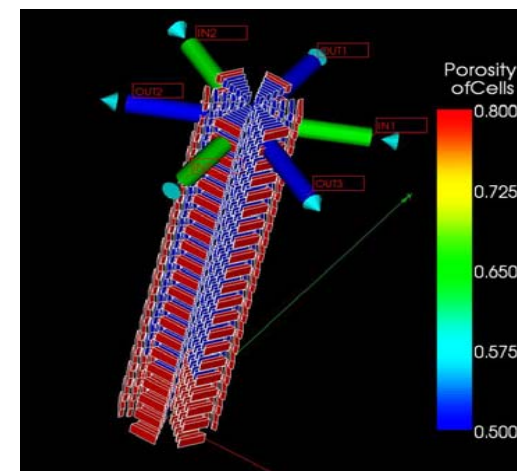
GRENOBLE - France, October 12, 13 and 14 2011

The CUC is the opportunity :

- For all the users : to show their works on various applications and to share experience on the CATHARE nuclear reactor safety code
- For the CATHARE team : to present features and functionalities of the new version of the CATHARE code



PORT21: pwr900_1D_C_1 Step: 123 Time: 128.117 Variable: ALFA



Informations CEA, gilles.lavialle@cea.fr



CATHARE User's Club-2011, Grenoble, France -n°1/5





Wednesday October 12th

Introduction

CATHARE use by foreign organisations

13:30	Registration		
14:00	Welcome, Introduction	15'	CEA
14:15	CATHARE team activities on CATHARE V2.5 code		
	o Maintenance, delivery, documentation	15'	CEA-G. LAVIALLE
	o Validation of SCTF facility	30'	CEA-I. DOR, P. GERMAIN
	o Demonstration of the GUIHARE graphic user interface	30'	CEA-I. DOR
15:30	Break		
16:00	Comparison of a Swiss PWR model using CATHARE and TRACE	30'	Mr SAMEC-ENSI, SWITZERLAND
16:30	Use of CATHARE at University of PISA	30'	Univ. PISA, ITALIA
17:00	Comparison between 6 equation and drift flux	30'	CEA-D. BESTION
17.30	Adjourn		



CATHARE User's Club-2011, Grenoble, France -n°2/5



CATHARE 2



V25 series

Thursday October 13th CATHARE use by foreign organisations

9:00	Research Reactors applications using CATHARE	30'	Mr MLADIN-INR, ROMANIA
9:30	Bel V Activities using CATHARE code	30'	Ms SARETTE, Mr BOUSBIA SALAH BEL-V-BELGIUM
10:00	Use of CATHARE at ENEA	30'	Mr POLIDORI-ENEA, ITALIA
<i>10:30</i>	<i>Break</i>		
11:00	Use of CATHARE at CCFE	30'	Mr MORENO-CCFE, UK, presented by Mrs GEFFRAYE- CEA
11:30	Safety Studies for Indian Nuclear Power Plants using CATHARE	30'	Mr SRIVASTAVA-BARC, INDIA
<i>12:00</i>	<i>Lunch</i>		



CATHARE User's Club-2011, Grenoble, France -n°3/5





Thursday October 13th

CATHARE use by foreign organisations and partners

14:00	Use of CATHARE at KURCHATOV institute	30'	Mr KOBZAR-KI, RUSSIA
14:30	Use of CATHARE at IPJ	20'	IPJ, POLAND
14:50	Use of CATHARE at AEKI-KFKI	30'	Mr MAYER-AEKI, HUNGARY
15:20	Use of CATHARE at NRI : MSLB Case at VVER-1000 Primary Circuit by Coupled CATHARE and TRIO_U Codes	20'	Mr MALACKA-NRI, CZECH REPUBLIC
<i>15:40</i>	<i>Break</i>		
16:00	Use of CATHARE at AREVA-NP	30'	AREVA-NP, FRANCE
16:30	CATHARE applications to Research Reactor and Sodium Fast Reactor safety studies at IRSN	30'	MM COCHEME, MAAS-IRSN FRANCE
17:00	Use of CATHARE at AREVA-TA	30'	AREVA-TA, FRANCE
<i>17.30</i> <i>19h30</i>	<i>Adjourn</i> <i>dinner at the restaurant</i>		



CATHARE User's Club-2011, Grenoble, France -n°4/5





Friday October 14th CATHARE use by partners Conclusions

9:00	Use of CATHARE at EDF	30'	EDF, FRANCE
9:30	Use of CATHARE at CEA		
	o CATHARE application for Sodium Fast-Breeder Reactor	30'	CEA and AREVA-NP, FRANCE
	o CATHARE-TRIO_U computation of Phenix tests	30'	MM TAUVERON and BAVIERE-CEA, FRANCE
<i>10.30</i>	<i>Break</i>		
	o Coupling with CATHARE for HEMERA :	30'	Mr LE PALLEC-CEA, FRANCE
11.30	CATHARE-3: current status and main improvements	30'	Mr EMONOT-CEA, FRANCE
12:00	Conclusions of the club	30'	Mr EMONOT-CEA, FRANCE
	o Use of the code, requests of users, etc.		
	o Futures versions of CATHARE 2, GUITHARE, CATHARE 3		
	o Discussion, remarks		

12:30

Lunch



CATHARE User's Club-2011, Grenoble, France -n°5/5

