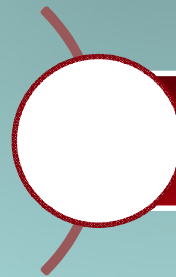


FROM RESEARCH TO INDUSTRY



*Welcome to the  
26<sup>th</sup> CATHARE  
Users' CLUB,  
Paris, October  
5<sup>th</sup> to 7<sup>th</sup> 2015*



*Ms LE THANH, Mr FAYDIDE*

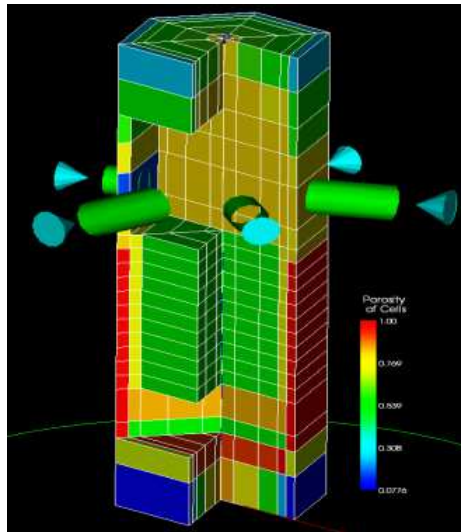
[www.cea.fr](http://www.cea.fr)



# THE CUC IS THE OPPORTUNITY

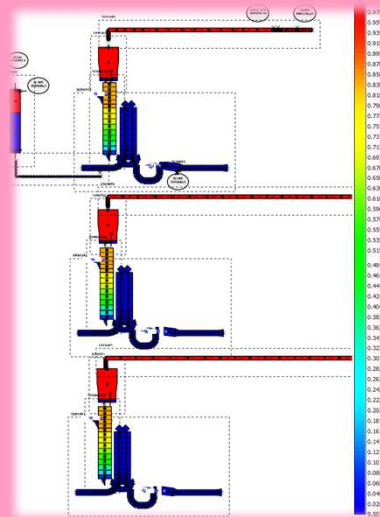
For all users, to show their works on various applications, to share experience on the CATHARE nuclear reactor safety code and to meet the CATHARE team

For the CATHARE team, to present the features and the functionalities of the versions of the code and to better know the overall range of applications with CATHARE



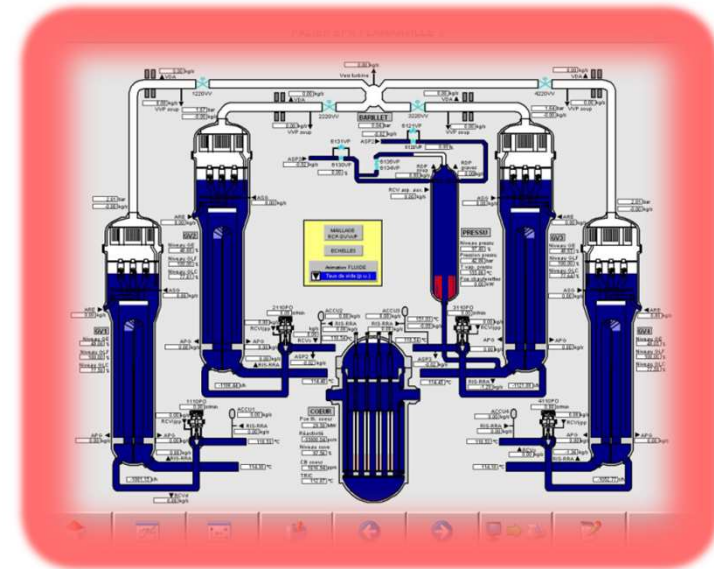
3D Guithare

CATHARE TEAM



Guithare

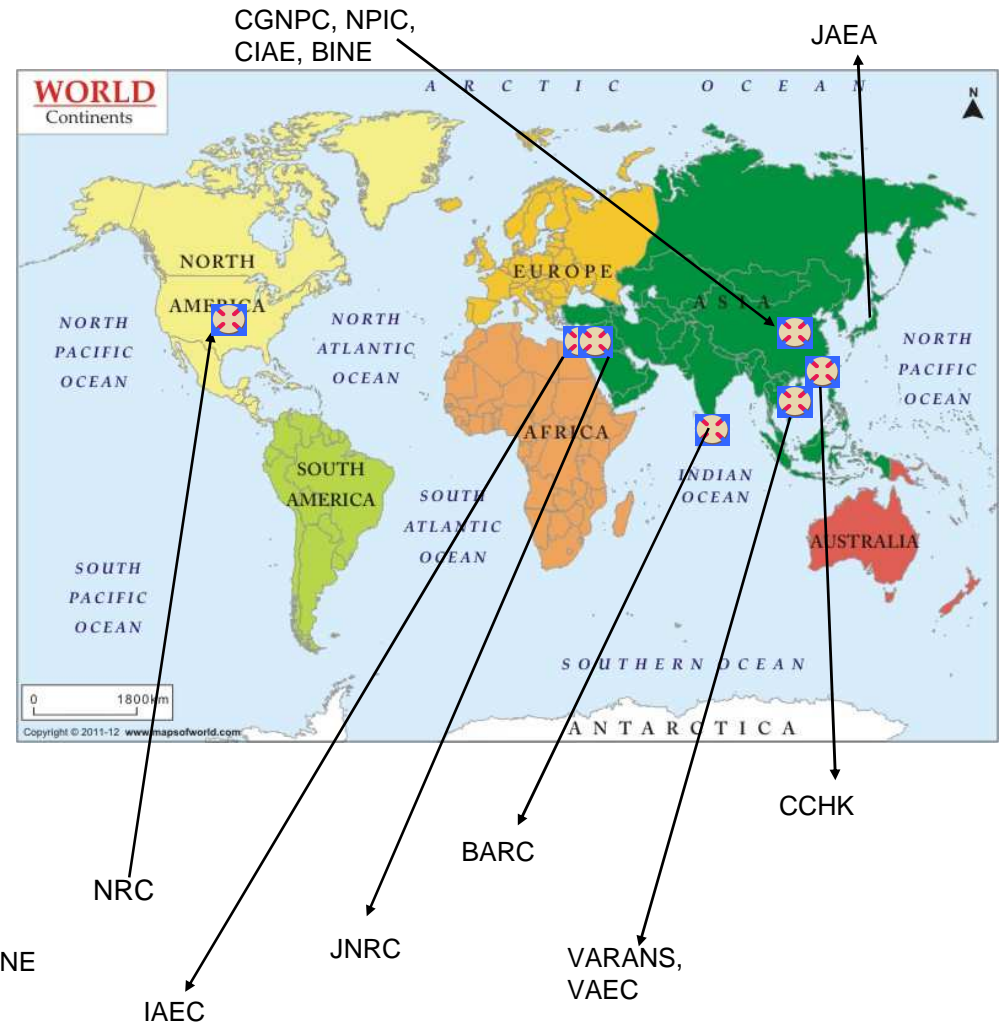
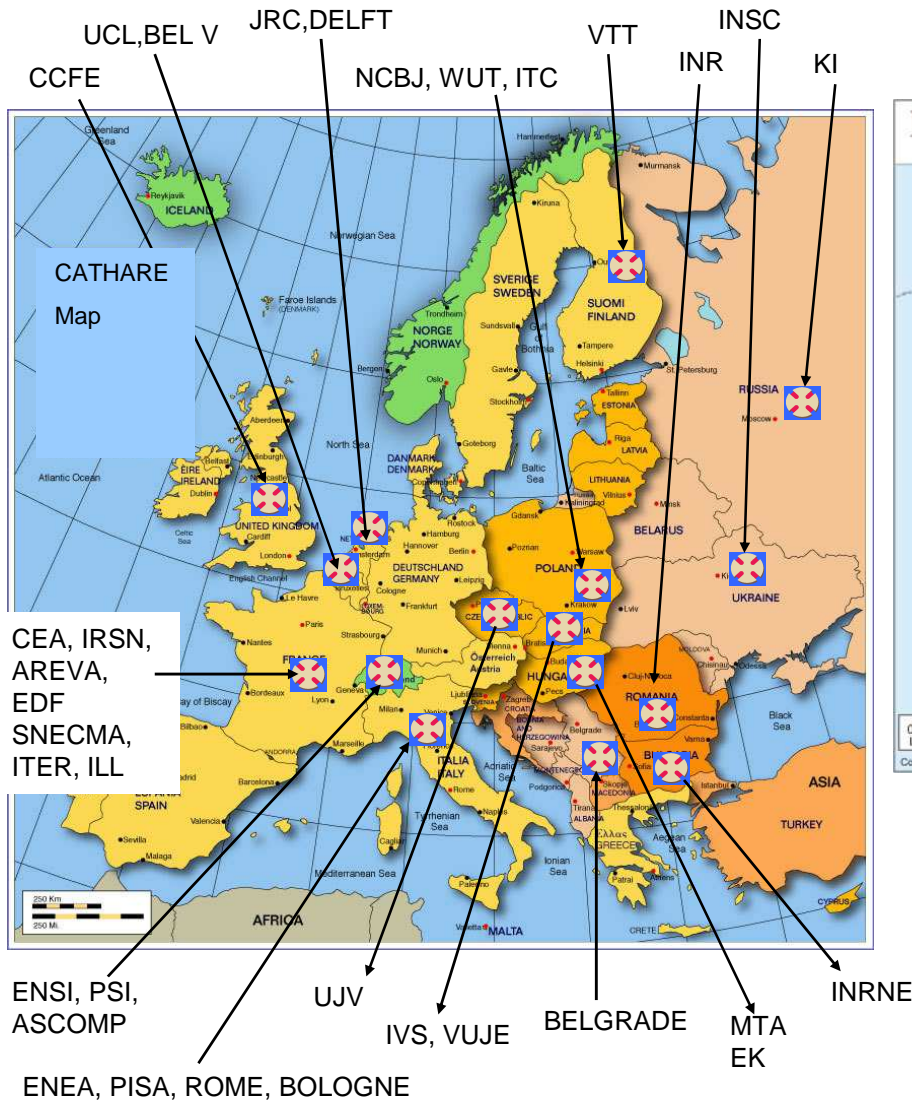
26<sup>th</sup> CATHARE Users' CLUB, Paris, October 5<sup>th</sup> to 7<sup>th</sup> 2015



CATHARE in simulators

Page 2

# CATHARE DISTRIBUTION WORLDWIDE : 24 COUNTRIES AND 44 ORGANISATIONS



# USE OF THE CATHARE CODE

## *CATHARE licences and users*

- CATHARE + GUTHARE as binary delivery
- 57 organisms have requested CATHARE
- For the last CUC (2013), 8 new requests
- 18 valid licenses
- 8 licenses have to be renewed

## *Range of applications*

- Safety analyses and studies
- Design conception
- Simulators
- Coupling with others codes (CFD, system,....)
  - through ICOCO and SALOME
- Other....

## *Type of reactors and facilities*

- PWR, VVER, Lead and Sodium Fast Reactor, Gas Cooled Reactor
- Nuclear Propulsion
- Experimental facilities : ASTRID, ITER, RJH, ILL-HFR (High-Flux Reactor), OSIRIS,...
- Cryogenic applications

## *Programs*

- French and CATHARE Partner programs
- International programs :
  - PKL, ROSA,
  - NURISP, NURESAFE,
  - ESFR, ALLEGRO

The CATHARE team, [Kim-Claire.LE-THANH@cea.fr](mailto:Kim-Claire.LE-THANH@cea.fr), [cathare.webmaster@cea.fr](mailto:cathare.webmaster@cea.fr)

CATHARE 2, [cathare-maintenance@cea.fr](mailto:cathare-maintenance@cea.fr)

CATHARE 3, [cathare3@cea.fr](mailto:cathare3@cea.fr)

[jerome.garcin@cea.fr](mailto:jerome.garcin@cea.fr), [gilles.lavialle@cea.fr](mailto:gilles.lavialle@cea.fr)

[alain.ruby@cea.fr](mailto:alain.ruby@cea.fr)

Commissariat à l'énergie atomique et aux énergies alternatives  
Centre de Saclay | 91191 Gif-sur-Yvette Cedex  
T. +33 (0)1 XX XX XX XX | F. +33 (0)1 XX XX XX XX

DEN  
DM2S  
STMF

Etablissement public à caractère industriel et commercial | RCS Paris B 775 685 019